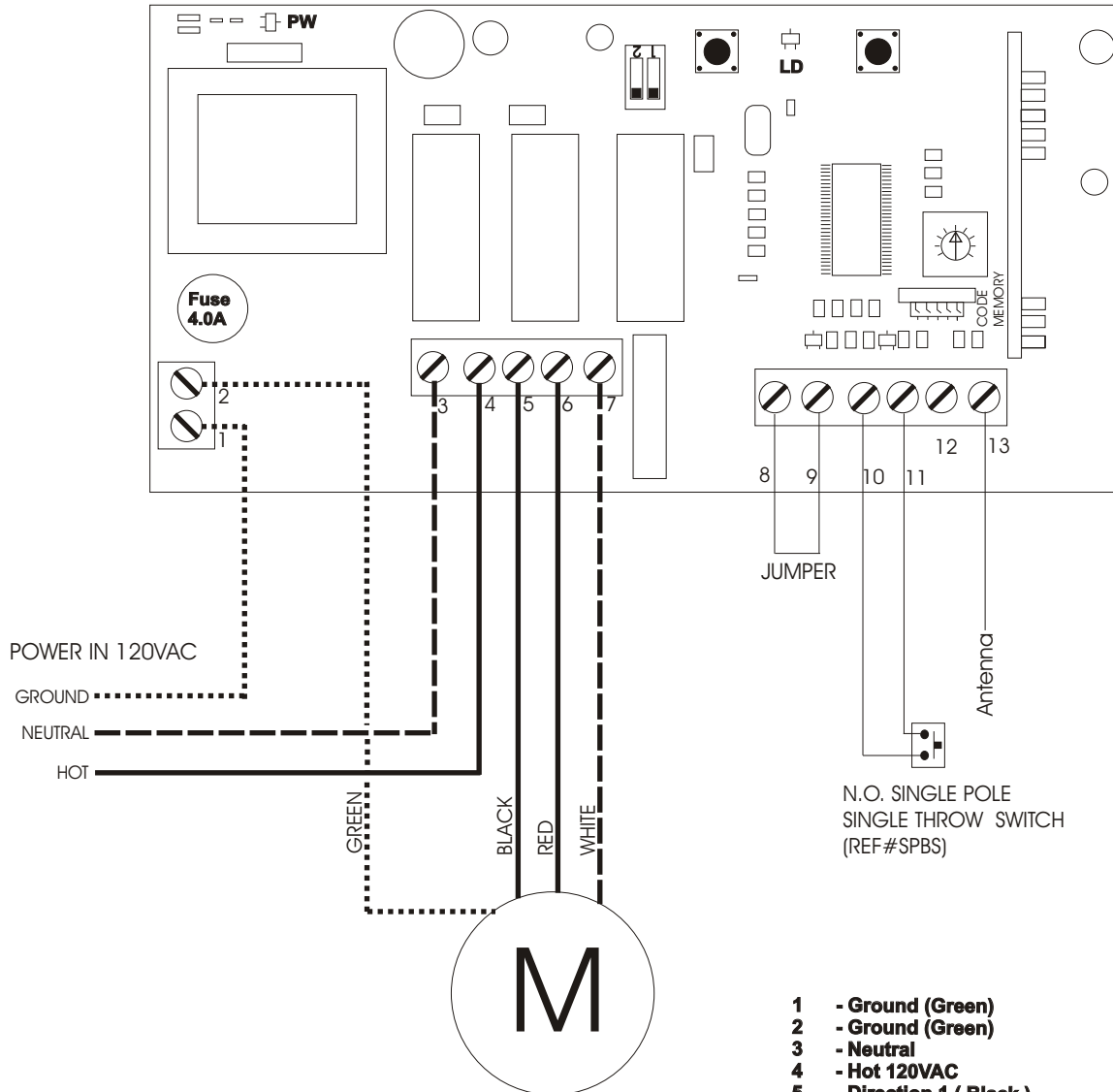




RC200 Receiver



* **NOTE:** If you are not using a safety device a jumper wire must be connected to terminals 8 & 9.

Do not cut antenna wire supplied with this unit.

- 1 - Ground (Green)
- 2 - Ground (Green)
- 3 - Neutral
- 4 - Hot 120VAC
- 5 - Direction 1 (Black)
- 6 - Direction 2 (Red)
- 7 - Common (White)
- *8 & 9 N. C. Reversing Sensor
- 10 & 11 Remote Override Switch (SPBS)
- 12 - Coax Antenna Connection (not supplied)
- 13 - Standard Antenna (supplied with unit)